



SEASONAL CHINESE PROGRAM

Language Center,
National Changhua University of Education





Annual Plan of Chinese Programs

Types	Jan.	Feb.	Mar.	Apr.	May	Jun.	Jul.	Aug.	Sep.	Oct.	Nov.	Dec.
Seasonal Chinese Program	Winter Session		Spring Session				Summer Session		Autumn Session			
Customized Chinese Program	Customized											
Credited Chinese Course			First Semester						Second Semester			
Mandarin and Culture Study Tour	Customized/By Project											



Seasonal Chinese Program

Small Classes

All classes are taught in small sizes, with 5 to 12 students in each class.

Various Options

We offer classes from the beginning level to an advanced level. Students will take a placement test before the term starts. We put emphasis on all four language skills, listening, speaking, reading and writing.

Personal Tutor

We will assign a tutor trained by our teachers for each international student. Tutors will arrange 1-on-1 academic counseling one hour per week free for students enrolled in seasonal Chinese program.

Culture Classes

Our cultural classes include paper cutting, calligraphy, Chinese painting, cuisine, etc.

Different Classes

We will arrange for our students to visit other schools with some actively, such as Chinese speech, Chinese oral reading.

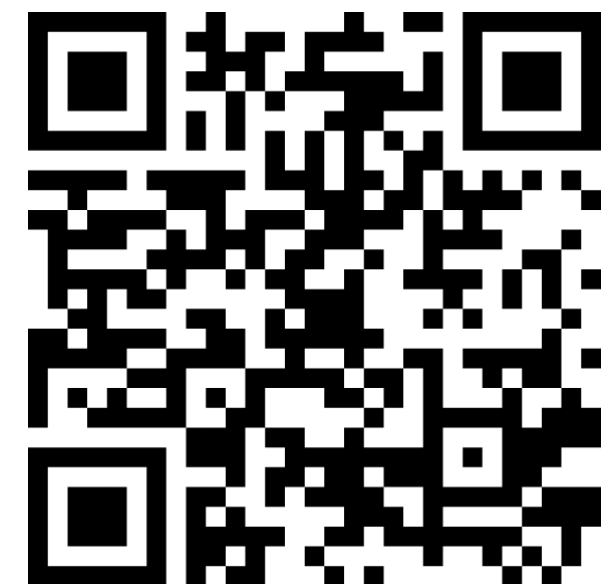


Course Information & Charges Form

● 2021 Academic Year Course Information and Charges Form

	2021				
	Spring Session	Summer Session	Two-Month Summer Session	Autumn Session	Winter Session
Application Deadline	Feb. 1	May. 3	May. 31	Aug. 7	Nov. 6
Registration Date	Feb. 22	May. 31	Jun. 28	Aug. 31	Nov. 30
Course Dates	3/2~5/30	6/7~8/29	7/5~8/29	9/7~11/29	2021/12/7~2022/2/21
Tuition Fee (15 hours/week)	NT\$27,000	NT\$27,000	NT\$20,000	NT\$27,000	NT\$22,500
Special Offer	Register for two seasonal Chinese programs (either Spring and Summer session, or Fall and Winter session), and you can take one credit Chinese course free.				
Total Hours of Class Time (15 hours/week)	180 hours/session	180 hours/session	120 hours/session	180 hours/session	150 hours/session

OUR WEBSITE



Other Fees

Item	Fee	Remark
Registration Fee	NT\$1,000	Only for first-time registered students who want to apply for visa for studying Chinese purpose. Not required for re-enrolled students.
	NT\$100	Only for first-time registered students who have other kinds of visa. Not required for re-enrolled students.
Health insurance fee	About 600 NTD/month, for accident and health. You will have the insurance according to the duration of courses.	If you come to Taiwan with visa for studying Chinese purpose, you must have health insurance. Please upload the certificate of health insurance if you have already applied for health insurance overseas.
National Health Insurance fee	About 750 NTD/month	Foreigners must be registered in the National Health Insurance program upon living in Taiwan for 6 months (6 months of continuous residence in Taiwan or with one trip abroad not exceeding 30 days when the actual residency period of 6 months is reached after the days abroad have been deducted).
Textbooks and other study materials (estimated)	Around 1,000~2,000 NTD/term	The exact amounts depend on the textbook used in each class.
School dormitory	NT\$5,930 (quad room)-9,730 (twin room) / per semester (4 months)	The exact cost depends on the duration of your stay.
Pick-up service	Around 630-700 NTD/per person	One time pick-up fee from Taoyuan International Airport or Taichung International Airport to the Language Center of NCUE.



Campus Facilities



SPORT FACILITIES

SPORT FIELD

SWIMMING POOL



School Dormitory



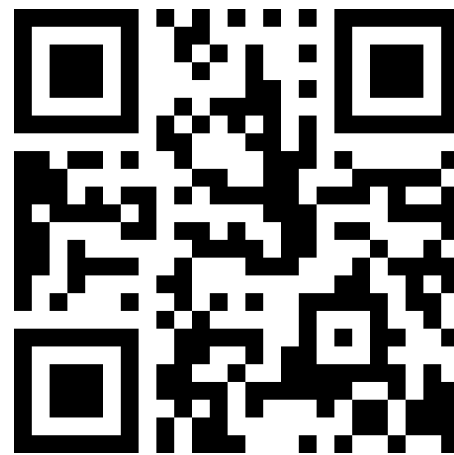


Application Process



QUALIFICATION

- Over 18 years of age
- With a high school or higher diploma or its equivalent



Sign up and
register on the
application system
with the materials
on our website



GET
ADMISSIONS LETTER
FROM NCUE



APPLY FOR VISA/Huayu
Enrichment Scholarship

Take the Admissions letter
and other documents
to the overseas embassies
or offices of the MOFA for
Visa Application or apply
for the Scholarship.

DOCUMENTS TO SUBMIT

1. Application form
2. A photocopy of **diploma**
3. **Official Financial Statement** /
Certificate of account balance
4. A photocopy of **passport**
5. **2-inch photo** (hand in soft copy first)



Huayu Enrichment Scholarship



AWARD VALUE

A Monthly stipend of 25,000 NTD.



DURATION

Summer term for 2 months
3, 6, 9 months
or 1 year



AVAILABLE SCHOLARSHIPS

Check the website of embassies, representative offices authorized by the Ministry of Foreign Affairs



APPLICATION DATE

by March 31 of each year

Huayu Enrichment Scholarship

Eligibility



International applicants above the age of 18, who possess a high school diploma or above, have shown excellent academic performance, and are of good moral character are eligible.



Candidates with one of the following qualifications may not apply:

A.

overseas Chinese student or a national of the R.O.C.

B.

currently registered as a student at a Mandarin Language Center or has sought a degree from a university or college in Taiwan.

C.

already received a HES or a Taiwan Scholarship, in the past.

D.

exchange student to Taiwan, during the scholarship period.

E.

currently receiving financial benefits from the Taiwan government or another educational institution.

APPLICANTS NEED TO SUBMIT THE FOLLOWING DOCUMENTS TO LOCAL EMBASSIES OR MISSIONS BEFORE THE ANNOUNCED DEADLINE.

(IN PRINCIPLE, THE YEARLY APPLICATION PERIOD IS FROM FEBRUARY 1ST THROUGH MARCH 31ST. HOWEVER, THE ACTUAL APPLICATION PERIOD WILL BE IN ACCORDANCE WITH THE GENERAL REGULATIONS OF THE LOCAL TAIWAN REPRESENTATIVE OFFICES).

A.



An application form
(provided by local
embassies or missions)

B.



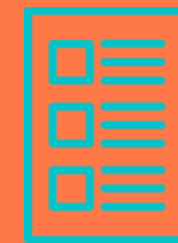
A photocopy of his/her passport or any other documents that can verify the nationality of the applicant.

C.



A photocopy of the certificate of the highest credential and transcript.

E.



Other documents required by local embassies or missions.

D.



A photocopy of the applications to the Mandarin Language Center.

Huayu Enrichment Scholarship

Application



Online Mandarin Course

Language Center,
National Changhua University of Education





Native &
Professional
Mandarin
Teachers



Online Mandarin Course

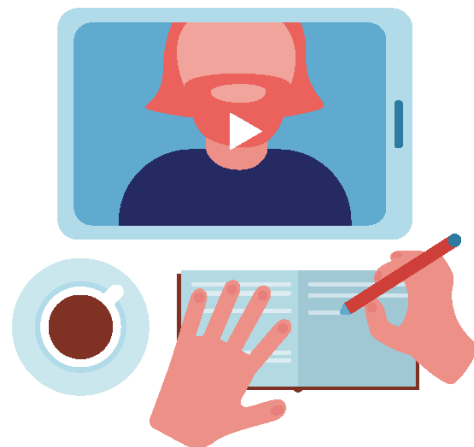


Features

Small
Classes : 1-1
Private
class or
group class
for 2~8.



Customized
& Flexible
Online
Courses



Learn
Mandarin
anywhere,
anytime



Synchronous
Online
Learning
to have
more
practice



Online Mandarin Course -Application Process

1

課程評估

Course Evaluation

填寫線上問卷，
讓我們更了解您的學習需求

To better understand your learnings,
please fill out the online questionnaire



2

線上分級測驗

Online Placement Test

參加線上測驗，
了解您的中文程度

Take online test
to know your Chinese level



3

購買課程及付費

Purchase courses and
Make Payment

行政人員將提供
專業諮詢及協助

Admin staff will give you
professional consultation and assistance



4

免費課前檢測

Free Interview Before Class

由老師線上面談深入了解
您的程度及需求

Online discussion with the teacher
about your level and learning needs



開始上課！
Start the class!



APPLY NOW

CONNECT US!

@NCUELCCH

